




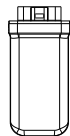
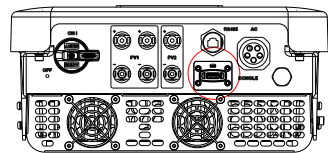
Pocket WiFi V3.0 (-P/-E) User Manual

Read this user manual carefully prior to use.

1. INSTALLATION

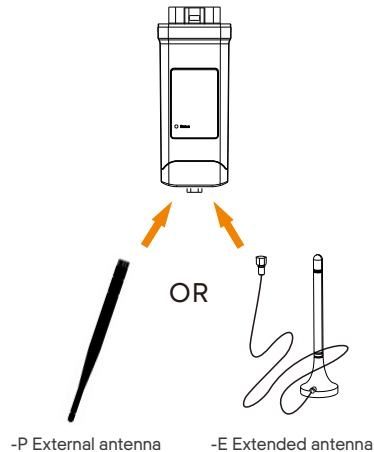
 Ensure all power has been turned off at least 5 minutes prior to installation.

- Remove the cover of DONGLE port at the bottom of the inverter. Ready to install your Pocket WiFi.



01

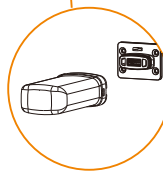
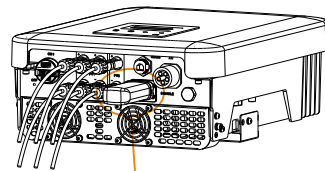
- For the -P/-E version of Pocket WiFi, screw the antenna to the end of the shell.



*Antenna type is divided into external antenna and extended antenna. It is already selected when you purchase Pocket WiFi.

02

- Plug the Pocket WiFi into the correct port of inverter.



Note that the direction of the buckle needs to be consistent.

03

2. MONITORING

- SolaxCloud Registration
Step 1: Use your smart phone to scan below QR code or search for the keyword "SolaxCloud" in browser to download the Monitoring App.

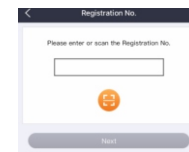


iOS



Google

- Step 2: Touch the Setting button at upper left corner of the Monitoring App to choose language.
- Step 3: Touch "Create a new account" at the bottom of Monitoring App.
- Step 4: Type in or scan the Registration No. and type in other information to complete the registration.



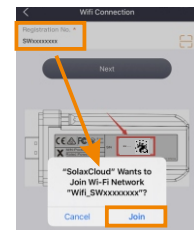
(Registration No. example)

04

- Wi-Fi Connection
Step 1: Login your account and turn to Account page in the app.
Step 2: Click "Wi-Fi Connection".



- Step 3: Type in or scan the Registration No. of the Pocket WiFi. Then touch Next and agree to Join the network of the Pocket WiFi.



05

Step 4: Type in your home Wi-Fi SSID and password, then Setting.

*5GHz Wi-Fi is unavailable for now.



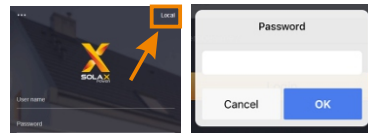
Step 5: Wi-Fi setting succeeds.

*Check more Wi-Fi setting information on www.solaxcloud.com/wifiSetting/

Local Mode

Use your smart phone to connect the SolaX Wi-Fi signal (Wifi_SWxxxxxxx). Then touch Local and type in password (initially same as the Registration No.) to access the Local Mode in the Monitoring App.

*Visit the local password setting instruction on www.solaxcloud.com/wifiSetting/

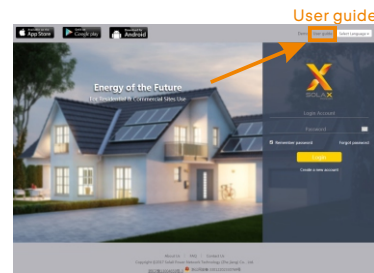


Monitoring Website

Step 1: Ensure that your computer or laptop is connected to a network.

Step 2: Open a browser and enter www.solaxcloud.com/

Step 3: Select your display language and read the User guide, then create a new account.



Step 4: Complete registration, login, add site and other related operations according to the guidelines of the User guide.

Step 5: Click the Warranty Manage and add your installation information to get warranty for your devices.

SAFETY INSTRUCTIONS

- Prior to installation, ensure all power going to the inverter has been cut off.
- Keep away from flammable, explosive materials.
- Do not dismantle or scrap by force.
- Children should be supervised to ensure that they do not play with this appliance.



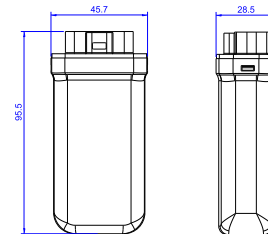
Indicates that the product must not be processed with household waste. It must be brought to an electric and electronic waste collection point for recycling and disposal. By ensuring the appropriate disposal of this product you also help in preventing potentially negative consequences for the environment and human health. The recycling of materials helps preserve our natural resources. For further information regarding the recycling of this product, please contact your municipality, local waste disposal center or the store where the products was purchased.

TECHNICAL DATA

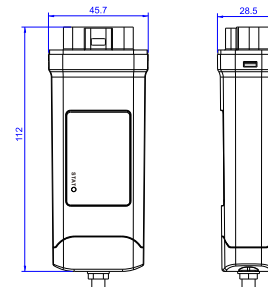
Product Name	Pocket WiFi
Model	Pocket WiFi V3.0 (-P/-E)
Supply Voltage	5V DC
Rated Power	1.3 W
EIRP Power	17.41 dBm(Measured Max. Average)
Frequency	2.4 GHz
Antenna Gain	3 dBi
Antenna Type	IPEX
Degree of Protection	IP 65
Operating Temperature	-40~85 °C
Wireless Mode	802.11 b/g/n
Dimension	95.5*45.7*28.5 mm
Dimension (-P/-E)	112*45.7*28.5 mm
Weight	50 g (-P/-E <107g)

APPEARANCE AND DIMENSIONS

Pocket WiFi V3.0:



Pocket WiFi V3.0 -P/-E:



WARRANTY REGULATION AND LIABILITY

Terms and Conditions

SolaX grants a standard 24-month warranty. The terms of this warranty begin from the date marked on the purchase invoice. SolaX will only perform warranty service when the faulty unit is returned to SolaX along with a copy of the invoice and proof of purchase issued by the dealer. In addition, the type label of the unit must be fully legible. If these requirements are not fulfilled, SolaX reserves the right to deny warranty service.

Exclusion of Liability

Warranty claims are excluded for direct or indirect damage due to:

- Use of unit in ways not intended, improper or substandard installation, improper operation and unauthorized modification to the units, or repair attempts.
- Missing warranty card and serial number.
- Operating the units with defective protective equipment.
- Influence of foreign objects and force majeure.
- Inadequate ventilation.
- Non-observance to relevant safety instructions.

PROOF OF PURCHASE

Retain this page as proof of your purchase. See warranty registration notice for more details.

Name Country

Phone Number Zip Code

Email

Address

Product Serial Number

Date of Commissioning

Installation Company Name

Date of Delivery

Signature

SolaX Power Network Technology (Zhejiang) Co., Ltd.

ADD Room 506, West Building A, No.525 Xixi Road, Hangzhou, Zhejiang Province, China 310007

Tel +86 571 56260011

FAX +86 571 56075753

EMAIL service@solaxpower.com

WEB www.solaxpower.com

